

10110/CLC
BuyLine 3119
Catalog No. 105



Claridge®



MANUFACTURING

the

FUTURE

For 58 Years

No. 737 & No. 748 Illuminated Floor Cases

Features:

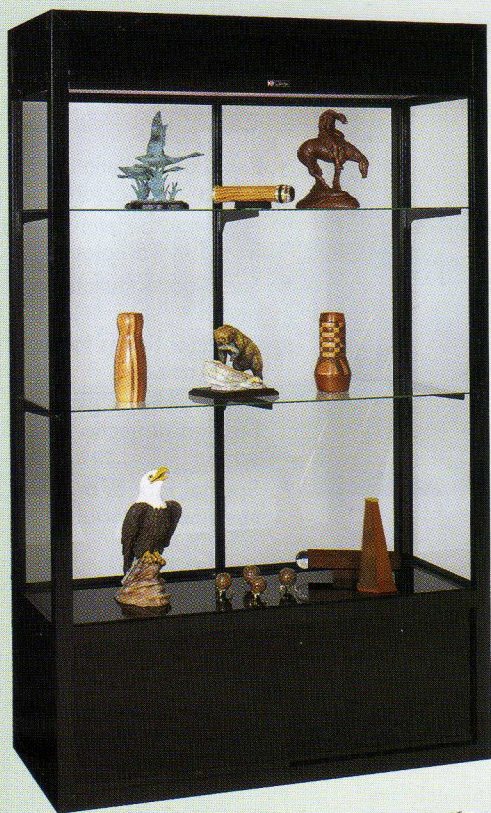
- Glass end panels
- 3/16" float glass sliding doors with flat key tumbler lock (Tempered glass is optional.)
- Three adjustable glass shelves
- Overall height 78", width 48", outside depth 18", inside depth 15-3/4"
- Base is 18" high and features storage space with sliding doors and lock

No. 748 Illuminated Floor Case

- Powder Coat finish aluminum frame and exterior are black.
- Glass back panel.

No. 748A, same as No. 748 without light and diffuser.

Weight approx 400 lbs.



No. 748

No. 737



No. 737 Illuminated Floor Case

- Extruded aluminum frame with satin anodize finish
- Exterior, and interior back panel, are walnut grain finish.

No. 737A, same as No. 737 without light and diffuser.

Weight approx 400 lbs.

No. 649 Executive Style Display Case

- Solid oak construction with Natural, Medium or Dark finish (Walnut and Mahogany are optional.)
 - Illuminated case has sliding glass doors with lock and three adjustable glass shelves
 - Height 78"; width 60"; depth inside 14-7/8", outside 18"
 - 24" high base with accessible storage space
 - Back Panel can be Claridge Cork, Fabricork, Designer Fabric or Hook-Fab.
- Weight approx. 615 lbs.



No. 330 Table Top Display Case

- Glass back panel
- Extruded aluminum frame, satin anodize finish
- Sliding glass doors; glass top, back and ends
- Three adjustable glass shelves
- 30" high; 36" wide; 12" deep

No. 333 (Not illustrated) Wall Type Case with tan cork or walnut grained finish back panel. Angle hangers furnished with wall case.

Weight 120 lbs.



No. 329 Table Exhibit Case

- Designed for use in libraries, lobbies, museums, etc.
 - Heavy-gauge extruded aluminum with satin anodize finish; bronze Duracolor or powder coat finishes optional
 - Glass top has continuous piano hinge; flat key tumbler lock
 - Height 36", width 24", length 48"; legs are 1-1/8" square
 - Bottom of case is walnut grained finish
- Weight, 250 lbs

No. 327 30" wide, 60" long, 36" high
Weight 310 lbs.



Trophy & Display Cases

Universal & Executive Style Cases

Nouveau Series Display Cases



- No. 452 Nouveau Case**
- Full view from every side
 - RAL3003 Powder Coat finish trim
 - Cinnabar marble-finished top panels and base
 - Incandescent Light
 - Three adjustable glass shelves
 - Lockable, hinged glass door
- Size 78" (H), 24" (W), 24" (D). Base Height 18". Weight 200 lbs.

No. 454 Nouveau Case

- Island style case
 - RAL8017 Powder Coat finish trim
 - Tortoise marble-finished top panels and base
 - Hinged glass door with lock
 - Three adjustable glass shelves
 - Incandescent Light
- Size 78" (H), 24" (W), 24" (D). Base Height 6". Weight 225 lbs.



No. 453 Nouveau Case

- Large, unobstructed display view
 - RAL 6005 Powder Coat finish trim
 - Sierra marble finish top panels and base
 - Fluorescent light with diffuser (Incandescent light optional)
 - Three adjustable glass shelves
 - Sliding glass doors with flat key tumbler lock
- Size 78" (H), 48" (W), 18" (D). Base Height 18". Weight 500 lbs.



No. 451 Nouveau Case

- Satin anodize aluminum trim
 - Silverado marble-finish inside bottom
 - RAL9017 Powder Coat finish base
 - Sliding glass doors with flat key tumbler lock
 - Three adjustable glass shelves
- Size 42" (H), 36" (W), 12" (D). Base Height 4". Weight 145 lbs.



Nouveau Series Display Cases

Features:

- Powder Coat finish aluminum trim
- Marbleized finish bases
- Contemporary, round-corner design

Base Features:

- Smooth, marble-look acrylic finish on Nouveau bases is
- More efficient than laminates and veneers
 - Highly durable with excellent scratch resistance
 - More economical than laminates and veneers

Powder Coat Finish is:

- An environmentally friendly process that requires no solvents, produces no air emissions
- More durable than traditional baked enamel finishes
- Scratch and impact resistant
- Available in a wide range of decorative, functional colors

Options:

- Custom sizes
- Custom colors
- Tackable back panels (in lieu of glass)



No. 450 Nouveau Case

- RAL6005 Powder Coat finish trim
 - Sierra marble finish base
 - Sliding glass doors with flat key tumbler lock
 - Three adjustable glass shelves
- Size 42" (H), 36" (W), 12" (D). Base Height: 12". Weight: 135 lbs.

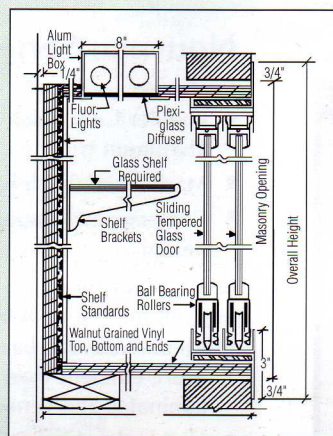
Large Door Display Cases

Features:

- Super-heavy satin anodized aluminum frame with 3" face
- Tempered glass doors with lock and key (Door similar to patio door)
- Three 6, 8, 10 or 12-inch wide adjustable tempered glass shelves with necessary brackets and standards (specify width when ordering)
- Tackable back panels in Claridge Cork, Fabricork, Hook-Fab, Designer Fabric or Tan Nucork (specify when ordering)
- Walnut or oak grain finish back panels

Options:

- Wood Box - specify depth of wood box (up to 24") - 16" depth standard - and finish - walnut or oak
- Fluorescent light
- Bronze Duracolor Finish
- Medium or Dark Bronze Anodize Finish
- Powder Coat Finish
- Intermediate Sizes



Large Door Display Cases

Number	Size H-W	Sliding Doors	Shipping* Weight
394	6' x 6'	2	360 lbs.
395	6' x 8'	2	480 lbs.
396	6' x 10'	3	600 lbs.
397	6' x 12'	4	720 lbs.
398	6' x 14'	4	840 lbs.
399	6' x 16'	4	960 lbs.

*For weight of unit with wood box, double weight shown. Freight Class 125.

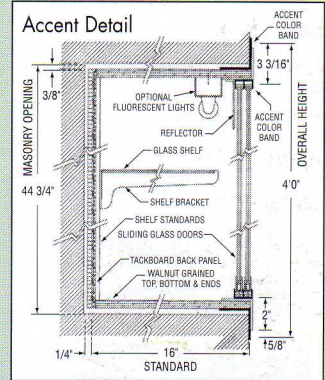
Recessed Display & Trophy Cases

Features:

- 3/16" float glass doors with finger pulls, locks and keys
- Three 6, 8, 10 or 12-inch wide adjustable glass shelves with necessary standards and brackets (specify width when ordering)
- Tackable back panels in Claridge Cork, Fabricork, Hook-Fab, Designer Fabric or Tan Nucork (specify when ordering)
- Walnut or Oak grain finish back panels
- Satin anodize aluminum finish
- 4' and 6' wide cases have one pair of sliding doors; 8' and 10' cases have two; and 12' and 16' sizes have three.

Options:

- Wood Box (shipped KD) - specify depth of wood box (up to 24") - 16" depth standard - and finish - walnut or oak
- Fluorescent light with reflector (Lights, when required, are installed but wiring is not included.)
- Tempered Glass
- Intermediate Sizes



Accent Series
Aluminum front with satin anodize finish and Powder Coat accent color band. Specify color required.

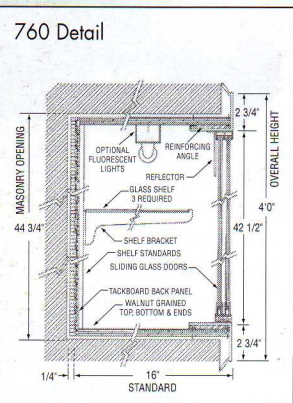
Accent Series

Number	O.A. Size H-W	Masonry Opening Size	Shipping* Weight
337	4' x 4'	44 3/4" x 44 3/4"	135 lbs.
338	4' x 6'	44 3/4" x 68 3/4"	204 lbs.
339	4' x 8'	44 3/4" x 92 3/4"	272 lbs.
340	4' x 10'	44 3/4" x 116 3/4"	340 lbs.
341	4' x 12'	44 3/4" x 140 3/4"	408 lbs.
342	4' x 16'	44 3/4" x 188 3/4"	544 lbs.

*For weight of unit with wood box, double weight shown. Freight class 125.

760 Series

Extra wide 2-1/2" aluminum front with satin anodize finish and beveled edges. Bronze Duracolor Finish, Medium or Dark Bronze Anodize Finish or Powder Coat Finish optional.



760 Series

Number	O.A. Size H-W	Masonry Opening Size	Shipping* Weight
762	4' x 4'	44 3/4" x 44 3/4"	135 lbs.
763	4' x 6'	44 3/4" x 68 3/4"	204 lbs.
764	4' x 8'	44 3/4" x 92 3/4"	272 lbs.
765	4' x 10'	44 3/4" x 116 3/4"	340 lbs.
766	4' x 12'	44 3/4" x 140 3/4"	408 lbs.
768	4' x 16'	44 3/4" x 188 3/4"	544 lbs.

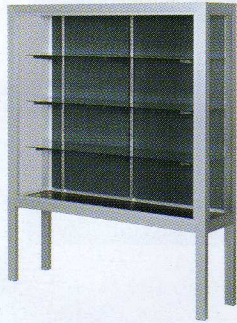
*For weight of unit with wood box, double weight shown. Freight class 125.

If No. 760 ordered as a front only, thickness of box material must be furnished.

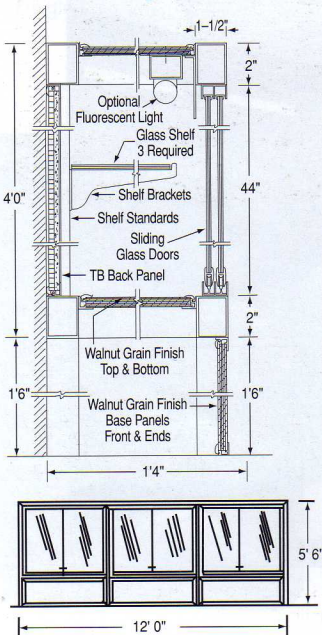
Premiere Series

Number of Sliding Doors	Freestanding Case		Wall Mounted	Case Width
	Alum Legs Number	Wood Base Number		
One	456	470	479	3'0"
Pair	457	471	481	4'0"
	458	472	482	5'0"
Two	463	474	483	6'0"
	465	475	484	8'0"
Three	467	476	485	10'0"
	469	478	486	12'0"
Pair	469	478	488	16'0"

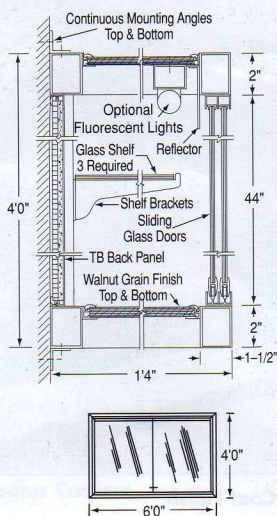
Specify width of glass shelves, and type and color of back panel.



Details for Wood Base Freestanding Display Case



Details for Wall Mounted Display Case



Trophy & Display Cases

10110/CLC
BuyLine 3119

Premiere Series

Recessed Trophy & Display Cases

Premiere Freestanding or Wall Mounted Display Cases

Features:

- Heavy gauge aluminum frame - satin finish
- 3/16" float glass sliding doors with locks
- Three each 6, 8, 10 or 12" wide adjustable glass shelves
- Tackable back panel in Claridge cork, Fabricork, Hook-Fab, Designer Fabric or Tan Nucork
- Walnut or Oak grain finish back panel
- Freestanding case is 5'6" OA, legs or bases are 18" high. Floor leveling glides included. Wall mounted case height is 4'0"; furnished with angle hangers. Depth inside is 13-3/4", outside 16"
- Two and three section cases made in one piece

Options:

- Bronze Duracolor Finish
- Medium or Dark Bronze Anodize Finish
- Powder Coat finish
- Fluorescent Lights
- Tempered Glass
- Intermediate Sizes



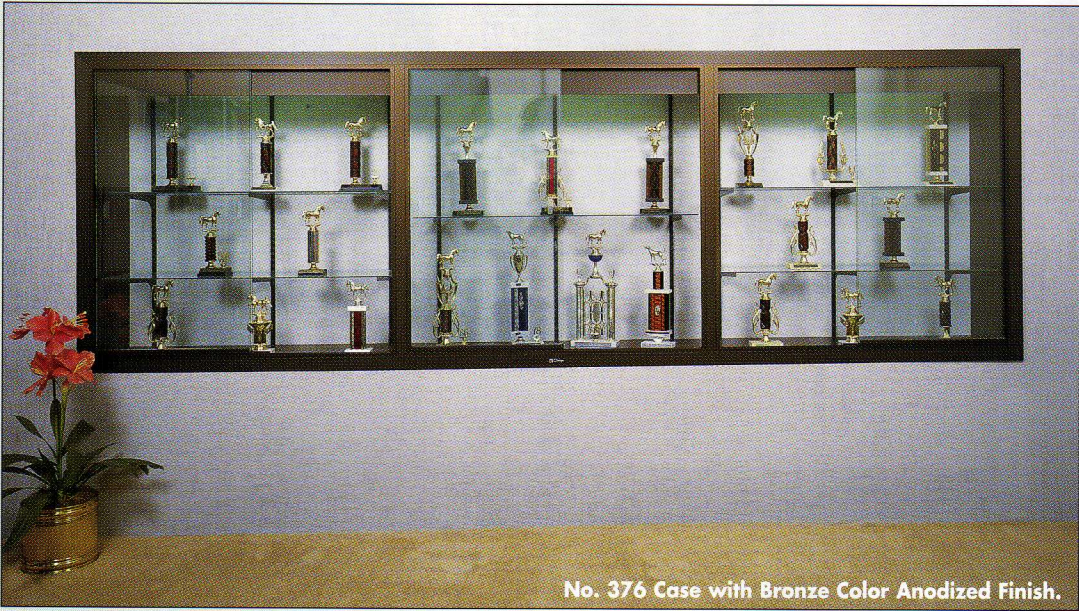
370 Series Recessed Trophy Cases

Features:

- Aluminum front with satin anodize finish
- 3/16" float glass doors with finger pulls, locks and keys
- One, two or three pair of doors - 4' and 6' widths have one pair; 8' and 10' widths have two pair; and 12' and 16' have three pair
- Three 6, 8, 10 or 12-inch wide adjustable glass shelves with standards and brackets
- Tackable back panels in Claridge Cork, Fabricork, Hook-Fab, Designer Fabric or Tan Nucork (See pages 8, 9, 10 and 11)
- Walnut or Oak grain finish back panels

Options:

- Hinged Doors
- Tempered Glass
- Bronze Duracolor Finish
- Medium or Dark Bronze Anodize finish
- Powder Coat Finish
- Wood Box (shipped KD) - specify depth of wood box (up to 24") 16" depth standard - and finish - walnut or oak
- Fluorescent light with reflector (Lights will be installed but wiring is not included.)
- Custom Styles and Sizes

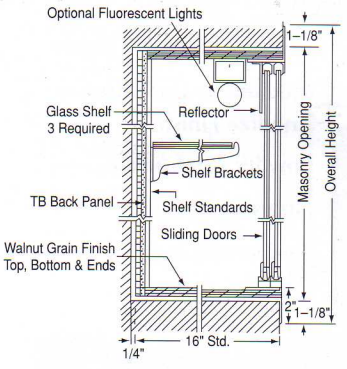


No. 376 Case with Bronze Color Anodized Finish.

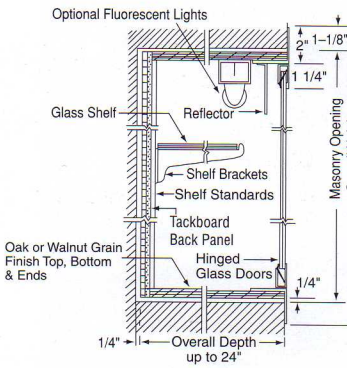
Sliding Door No.	Hinged Door No.	Size H-W	Masonry Opening Size	*Weight
372	372H	4' x 4'	45 3/4" x 45 3/4"	135 lbs.
373	373H	4' x 6'	45 3/4" x 69 3/4"	204 lbs.
374	374H	4' x 8'	45 3/4" x 93 3/4"	272 lbs.
375	375H	4' x 10'	45 3/4" x 117 3/4"	340 lbs.
376	376H	4' x 12'	45 3/4" x 141 3/4"	408 lbs.
378	378H	4' x 16'	45 3/4" x 189 3/4"	544 lbs.

Specify width of glass shelves, depth and finish of wood box, if required, and type and color of back panel.
 *For weight of unit with wood box, double weight shown.
 Freight Class 125.

Sliding Door Detail



Hinged Door Detail



No. 376H Case with Powder Coat Finish

No. 309 Wall Mounted Display Case

- Two sliding 3/16" float glass doors with locks
- Adjustable glass shelves
- Sliding glass door shoe, channel, track, shelf standards and brackets are heavy-gauge extruded aluminum with bronze Duracolor finish.
- 7" cabinets are 5-1/8" inside; 10-3/4" deep cabinets are 8-7/8" inside.



No. 309

Number	High-Wide-Deep	No. Shelves	Shelf Width	Weight
309	3' x 4' x 7"	2	4"	200 lbs
309A	4' x 5' x 7"	3	4"	260 lbs
309B	4' x 6' x 7"	3	4"	300 lbs
309C	4' x 5' x 10 3/4"	3	8"	320 lbs
309D	4' x 6' x 10 3/4"	3	8"	340 lbs.

(Note: 10-3/4" deep units have a center mullion for added support.)
Freight class 125.

No. 310 Bulletin Board Cabinet

- 3-1/4" oak perimeter; inside depth is 1-1/4"
- Two sliding 3/16" float glass doors with locks
- Sliding glass door shoe, channel and track are heavy-gauge extruded aluminum with bronze Duracolor finish.

No. 310 Bulletin Board Cabinet

Number	Size (H x W)	Weight
310	36" x 48"	110 lbs.
310A	36" x 60"	130 lbs.
310B	36" x 72"	150 lbs.
310C	48" x 60"	180 lbs.
310D	48" x 72"	200 lbs

Freight class 125.



No. 310

Display Cases & Bulletin Board Cabinets

Recessed & Wall Mounted Display Cases Wood Frame Bulletin Board Cases & Cabinets

Wood Framed Bulletin Board Cabinets & Cases

Features:

- Constructed of finest grade oak with natural, medium or dark finish
- Mitered corners
- 3/16" float glass doors, hung on continuous piano hinges - 307 and 308 (309 & 310 have sliding doors)
- Flat key tumbler locks

- Bulletin board surface may be Claridge Cork, Fabricork, Designer fabric or Hook-Fab

Options:

- Walnut or Mahogany wood
- Tempered glass (in 307, 308, 309 and 310 units)
- Fluorescent lights (309 and 310 units only)

Specify type of posting surface and frame finish desired. Claridge Tan Cork and natural finish oak frame will be furnished unless otherwise specified.



No. 307 Single Door

Number	High-Wide	Weight
† 307	24" x 18"	20 lbs.
† 307A	30" x 20"	25 lbs.
† 307B	36" x 24"	36 lbs.
† 307C	36" x 30"	42 lbs.
† 307D	42" x 30"	50 lbs.

No. 307 and 308 Cabinets are 1 5/8" deep outside. Inside depth is 3/8".

†Can ship UPS.

No. 307 with Radius Corners

No. 308 Double Door

Number	High-Wide	Weight
308	36" x 48"	60 lbs.
308A	48" x 48"	70 lbs.
308B	42" x 60"	80 lbs.
308C	48" x 60"	100 lbs.
308D*	48" x 72"	120 lbs.

*308D has three doors.

Nos. 307 and 308 are freight class 100.

No. 311 Open Face (not illustrated)

Number	High-Wide	Weight
† 311	36" x 48"	36 lbs.
311A	48" x 48"	50 lbs.
311B	48" x 72"	72 lbs.

†Can ship UPS.

No. 311 units use freight class 70.

Imperial Series Cabinets

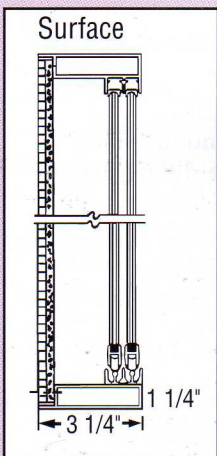
Without Head Panel		With 6" Translucent Plexiglas Head Panel			
Bulletin Board Number	Directory Number	Bulletin Board Number	Directory Number	Size H-W	Weight Lbs.
294	280	300	285	36" x 48"	127
295	281	301	286	36" x 60"	145
296	282	302	287	36" x 72"	160
297	283	303	288	48" x 60"	190
298	284	304	289	48" x 72"	249

Combination Changeable Letter & Bulletin Boards

(not illustrated)

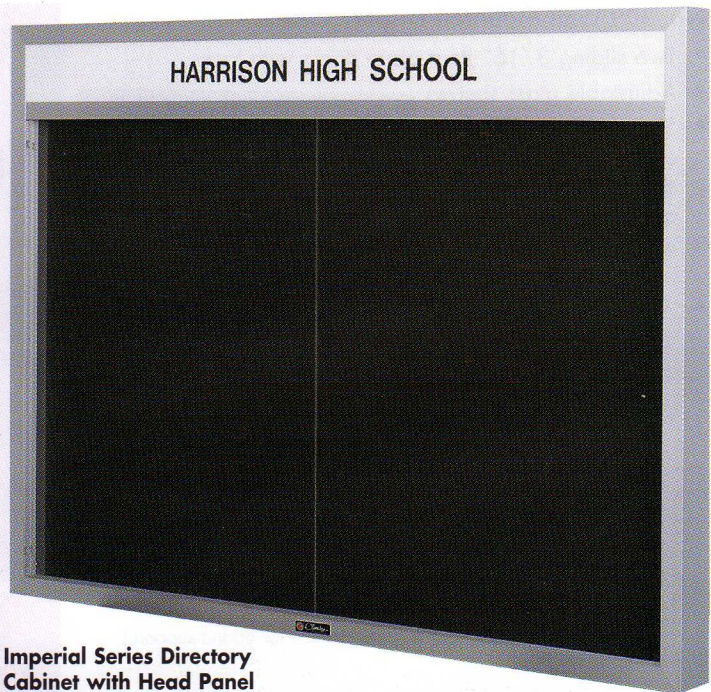
Number	Size H-W	Letter Panel Width	Cork Panel Width	Weight Lbs.
290	36" x 48"	24"	24"	127
291	36" x 60"	30"	30"	145
292	48" x 60"	30"	30"	190
293	48" x 72"	36"	36"	249

Imperial Details



The directory letter panel and the tackable bulletin board panel are separated by a narrow H-bar. The letter panel is available in D-R grooved cork in black and tan, felt in green, gray, red and black, or vinyl in brown, blue and black. See page 38.

Freight class 100.



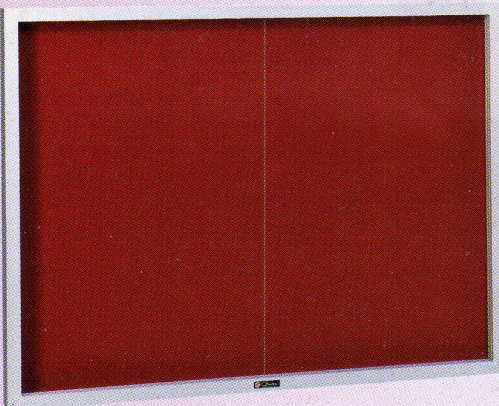
Imperial Series Directory Cabinet with Head Panel

Imperial Series Bulletin and Directory Cabinets & Display Cases

- Constructed of heavy-gauge satin anodized aluminum
- Two sliding 3/16" float glass doors with flat key tumbler lock
- Tackable back panel available in Claridge Cork, Fabricork, Hook-Fab, Designer Fabric or Tan Nucork
- Directory back panel available in felt, vinyl or grooved cork (see page 38)
- Display case has adjustable glass shelves
- Bulletin and directory cabinets are 3-1/4" O.A.; inside depth is 1-1/2". Inside depth for 7" display cases is 5-1/8"; 10-3/4" cases is 8-7/8"
- Furnished with Z-bar hangers for cabinets and angle hangers for cases.
- 6" Translucent plexiglas header panel on 285 - 289 and 300 - 304 cabinets and 464 cases - specify name

Options:

- Fluorescent light
- Tempered glass
- Bronze duracolor, medium or dark bronze anodize or powder coat finishes
- Display case back panel can be oak or walnut grain finish



Imperial Series Bulletin Board Cabinet without Head Panel



Imperial Series Display Case with Head Panel

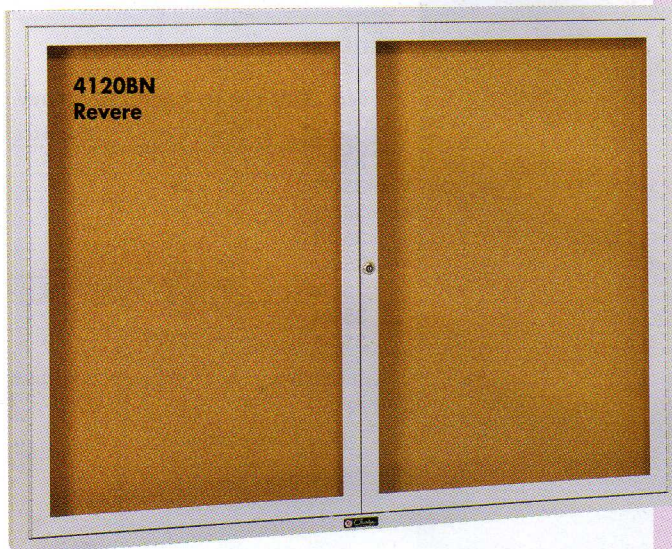
Sliding Door Display Cases

Without Header Number	With Header Number	Size H x W x D	Shelves		Weight Lbs.
			No.	Width	
462	464	3' x 4' x 7"	2	4"	190
462D	464D	4' x 5' x 7"	3	4"	300
462E	464E	4' x 6' x 7"	3	4"	375
462J	464J	4' x 5' x 10-3/4"	3	8"	335
462K	464K	4' x 6' x 10-3/4"	3	8"	400

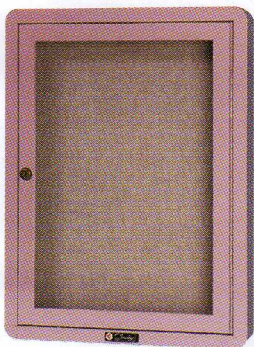
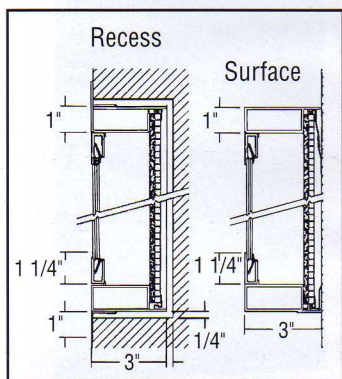
Freight class 125.

Revere Series

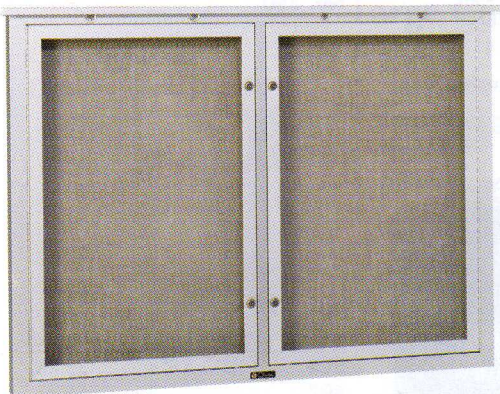
- Available with Square or Radius Corners
- Constructed with a 1" x 3" hollow tube perimeter instead of angular tubing.



Revere Installation

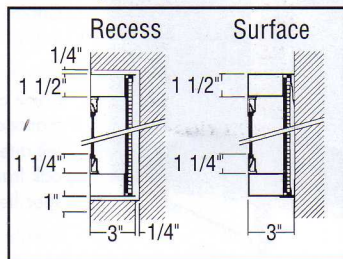


Revere with Radius Corners



2041 Contemporary Weatherproofed

Contemporary Installation



Bulletin Board & Directory Cabinets

Revere, Contemporary & Imperial Style

Revere & Contemporary Cabinets

- Satin anodize aluminum frame
- Tackable back panels can be Claridge Cork, Fabricork, Designer Fabric, Hook-Fab or Tan Nucork
- 3/16" float glass doors with flat key tumbler locks
- Continuous piano hinges (for hinged door cabinets)
- Ground-in finger pulls for sliding doors (available in Contemporary cabinets only)
- Header panel (Contemporary)
- Radius corners - sizes through 4' x 8' - in white, beige, black or bronze duracolor (Revere Series cabinets only)
- Surface mounted units equipped with Z-bar hangers
- Inside depth 1-3/4"

Options:

- Fluorescent light
- Tempered glass
- Recessed installation (Provide finished opening size. Cabinets are made 1/2" smaller in each direction for easy fit.)
- Special or intermediate sizes
- Medium or dark bronze anodize finish
- Bronze duracolor finish
- Powder coat finish
- Sliding doors (Contemporary only)



Contemporary Cabinets with or without Header Panel

- Contemporary cabinets have 1-1/2" x 3" rectangular aluminum perimeter trim.

Revere & Contemporary Bulletin Board Cabinets

Revere Tan Nucork Number	Revere Claridge Cork Number	Contemporary Without Header Number	Contemporary With Header Number	Size H-W	Weight w/Glass	No. of Doors
†3520BN	†3520BC	†2035	†3035	3' x 2'	36 lbs.	1
3620BN	3620BC	2036	3036	3' x 2'6"	45 lbs.	1
3720BN	3720BC	2038	3038	3'6" x 2'6"	53 lbs.	1
3820BN	3820BC	2037	3037	3' x 3'	54 lbs.	1
3920BN	3920BC	2039	3039	3'6" x 3'	63 lbs.	1
4120BN	4120BC	2041	3041	3' x 4'	72 lbs.	2
4020BN	4020BC	2040	3040	4' x 4'	96 lbs.	2
4220BN	4220BC	2042	3042	3'6" x 5'	105 lbs.	2
4320BN	4320BC	2043	3043	4' x 5'	120 lbs.	2
4420BN	4420BC	2044	3044	4' x 6'	144 lbs.	2
4520BN	4520BC	2045	3045	4' x 7'	224 lbs.	3
4620BN	4620BC	2046	3046	4' x 8'	256 lbs.	4
4820BN	4820BC	2048	3048	4' x 10'	320 lbs.	4
5020BN	5020BC	2050	3050	4' x 12'	384 lbs.	4

† Can ship UPS or RPS. Freight class 100.

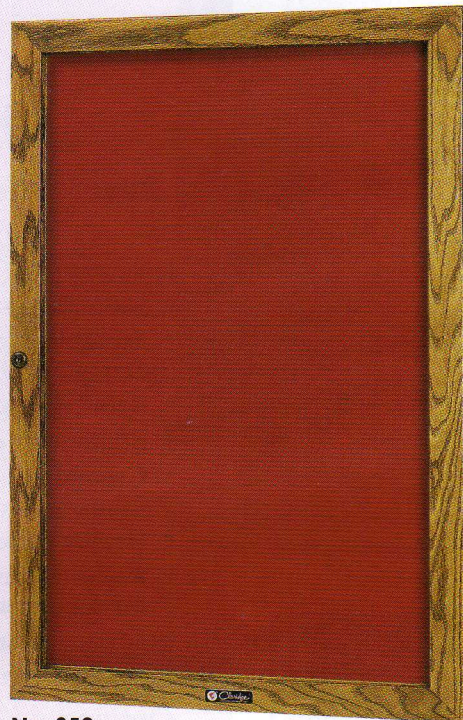
No. 350 Open Face Directory No. 352 & No. 354 Glass Enclosed Directories

Features:

- Wood framed directories have mitered corners
- Available in oak with natural, medium or dark finish
- Grooved cork in black or tan
- Felt in gray, green, red or black
- Vinyl in brown, blue or black
- 3/16" Float glass doors hung on full-length piano hinges and equipped with flat key tumbler lock (No. 350 is open face)
- Concealed hangers

Options:

- Walnut with natural or oil finish
- Mahogany with natural or stain finish
- Tempered glass
- Radius corners
- Roman style directory letters



No. 352

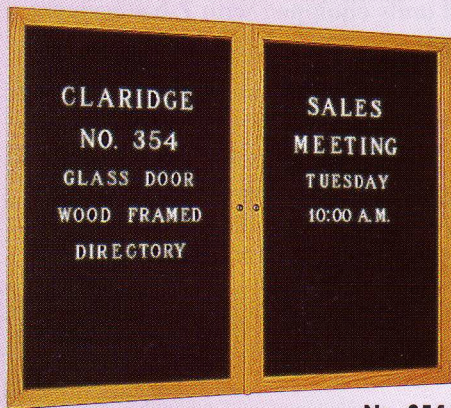
No. 350 Open Face Directory

Number	Size (H x W)	Weight Lbs.
350C	18" x 24"	15
350D	24" x 18"	15
350G	24" x 36"	28
350H	36" x 24"	28
350L	36" x 48"	45
350M	36" x 60"	48
350N	48" x 60"	60
350R	48" x 72"	72

Specify type and color of panel and frame finish.

Intermediate sizes available.

Freight class 70.



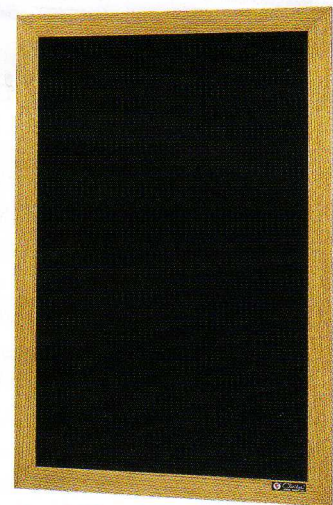
No. 354

No. 352 & 354 Glass Door Directories

Number	Size (H x W)	Weight Lbs.	No. Doors
352B	18" x 24"	35	1
352C	24" x 18"	35	1
352F	36" x 24"	50	1
352H	42" x 30"	65	1
354A	48" x 48"	100	2
354B	36" x 48"	85	2
354C	36" x 60"	90	2
354D	48" x 60"	120	2
354E	48" x 72"	145	3
354G	48" x 96"	288	4

Cabinet depth is 1-5/8" outside and 3/8" inside.

Freight class 100.



No. 350

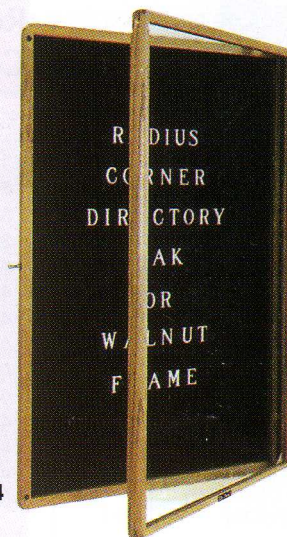
No. 594 Radius Corner Directory or Bulletin Board Cabinet

Features:

- 1" x 1-1/4" wood frame with radius corners
- Oak with Natural, Medium or Dark finish
- 3/16" glass door hung on piano hinges
- Push-type plunger lock
- Directory panels grooved on 1/4" centers in cork, vinyl or felt
- Bulletin board panel in Claridge Cork, Fabricork, Hook-Fab, Designer Fabric or Tan Nucork
- Furnished with concealed hangers

Options:

- Tempered Glass
- Walnut or Mahogany Wood
- LCS Markerboard panel



No. 594

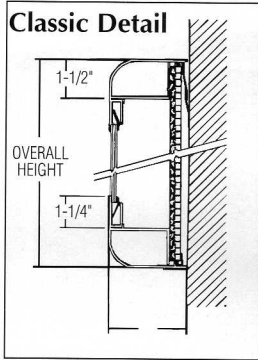
No. 594 Cabinet

Number	Size (H x W)	Weight Lbs.
594	24" x 18"	35 lbs.
597	36" x 24"	55 lbs.
599	42" x 30"	98 lbs.

Cabinet depth is 2-7/8" O.A.; 1-3/8" inside.

Specify color, type of panel and if frame is to be oak, walnut or mahogany and finish desired. Black felt directory panel and natural finish oak frame furnished unless otherwise specified.

Freight class 100.



**Classic Style
Bulletin Board Cabinet**

Number	Size (H x W)	Weight Lbs.
1021	3' x 2'	45 lbs.
1022	3' x 3'	64 lbs.
1023	3' x 4'	86 lbs.
1024	4' x 4'	116 lbs.
1025	4' x 5'	148 lbs.
1026	4' x 6'	178 lbs.

Note: 2' and 3' wide cabinets have one door; 4', 5' and 6' widths have two.

Bulletin Board & Directory Cabinets

Classic & Contemporary Style
Aluminum & Wood Frame

Classic Style Bulletin Board Cabinet with Radius Frame



Features:

- Radius edges
- 1-1/2" x 3" hollow tube perimeter
- 1-3/4" inside depth
- Continuous piano hinges
- 3/16" float glass doors with flat key tumbler locks
- Z-Bar Hangers
- Tackable back panels in Claridge Cork, Fabricork, Hook-Fab, Designer Fabric or Tan Nucork (See pages 8 - 11)

Options:

- Fluorescent light
- Bronze Duracolor Finish
- Medium or Dark Bronze Anodize Finish
- Powder Coat Finish
- Special sizes on request
- Tempered glass

Large Contemporary Series Bulletin Board Cabinet

Features:

- Heavy-gauge rectangular aluminum with satin anodize finish
- Tempered glass doors hung on piano hinges with flat key tumbler locks
- Mitered corners reinforced for rigidity
- Tackable back panels in Claridge Cork, Fabricork, Hook-Fab, Designer Fabric or Tan Nucork (See pages 8 - 11.)
- Angle hangers furnished - top and bottom
- 3" housing - 1-3/4" I.D.; 4" housing - 2-3/4" I.D.

Options:

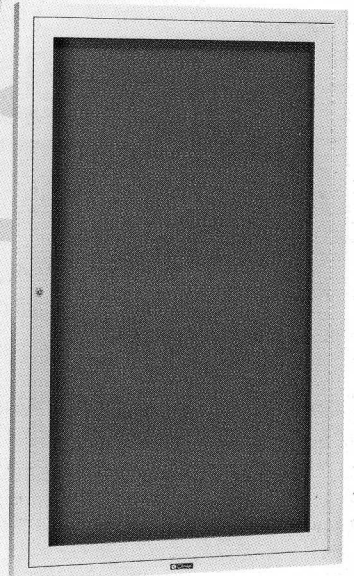
- 1-1/2" x 3" or 1-3/4" x 4" housing
- Surface or Recess installation
- Fluorescent light (not available in 3" cabinets)
- Bronze Duracolor Finish
- Medium or Dark Bronze Anodize Finish
- Powder Coat Finish

Contemporary Series

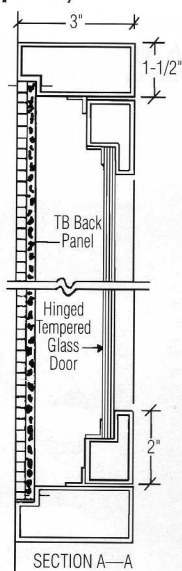
Number	Size (H x W)	Weight Lbs.
2153	5' x 3'	180
2156	5' x 6'	300
2164	6' x 4'	250
2168	6' x 8'	500

Note: 3' and 4' widths have one door; 6' and 8' cabinets have two.

Specify depth of housing - 3" or 4", recess or surface installation (if for recess installation, provide finished opening measurements), and type and color for back panel.



Contemporary Detail



No. 432 Open Face & No. 435 Glass Door Directories

Directories

Features:

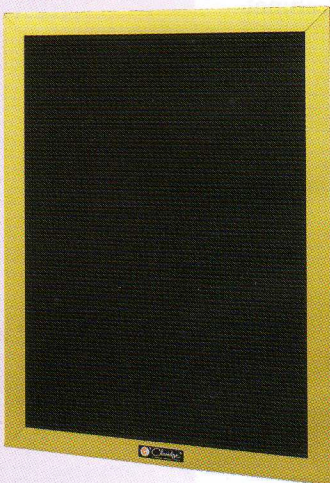
- Satin anodize aluminum frame
- Directory letter panels in felt, vinyl and grooved cork (See below for color selection)
- Concealed hangers
- 435 has one 3/16" float glass hinged door; 432 is open face

Options:

- Tempered glass
- Bronze Duracolor finish
- Medium or Dark Bronze Anodize
- Gold Anodize
- Powder Coat finish
- Letters and Numbers
- Intermediate sizes

Note: Specify color, type of panel and frame finish. If not specified, black felt with satin anodize trim will be furnished.

**No. 432
Open Face Directory**



No. 432 Open Face Directory

Number	Size (H x W)	Weight Lbs.
432C	18" x 24"	15
432D	24" x 18"	15
432G	24" x 36"	28
432H	36" x 24"	28
432L	36" x 48"	45
432M	36" x 60"	48
432N	48" x 60"	60
432P	36" x 72"	54
432R	48" x 72"	72

Freight class 70.

**No. 435
Glass Door Directory**



No. 435 Glass Door Directory

Number	Size (H x W)	Weight Lbs.
435B	18" x 24"	35
435C	24" x 18"	35
435F	36" x 24"	55
435H	42" x 30"	98

Case depth 1-3/8" outside, 7/32" inside.
Freight class 100.

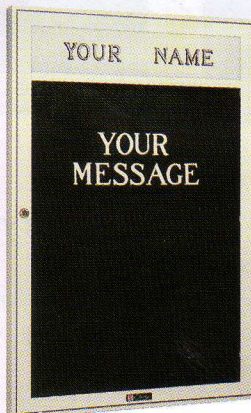
Directory Letters

Roman Style Molded White Plastic Letters, Numerals and Punctuation Marks

Available for use on indoor or outdoor changeable letter signs.

Standard assortments - available in multiples of 100 - include: assorted letters; assorted numbers; or assorted letters and numbers combined. Individual letters and numbers may be ordered in sizes and quantities desired. Punctuation marks are not included in the standard assortments and may be ordered individually.

Letter Sizes: 3/8", 1/2", 3/4", 1", 1-1/2", 2", 3"



EPH Header

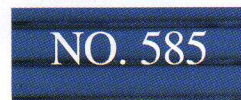
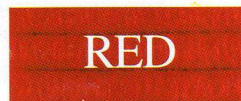
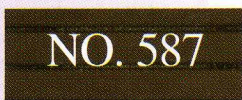
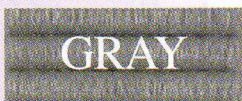
- Optional 6" plexiglas header panel, available on hinged door cabinets.
- If header is desired, specify on order "with optional EPH Header".
- Six letters per foot of header are furnished.

NOTE: A separate header panel will be furnished above each door on cabinets with more than one opening.

Directory Color Selector

- Cork is available in tan and black.
- Felt is available in green, gray, red and black.
- Vinyl is available in brown, blue and black.

Because of a tendency to fade from the sunlight we do not recommend using felt or cork on outdoor signs. We recommend vinyl.



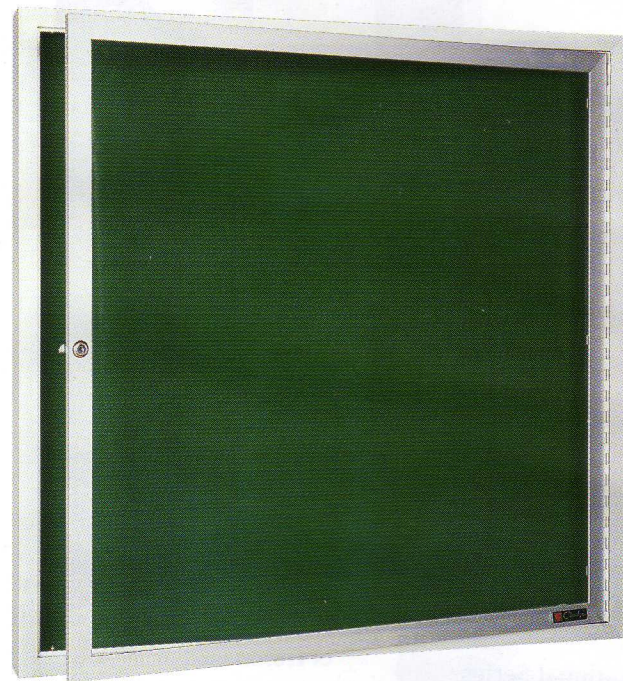
Storage Box with Standard Assortment of Letters and Numerals

No.	Letter Size
383	3/8"
384	1/2"
385	3/4"
386	1"
387	1-1/2"
388	2"

Storage boxes also available without letters and numerals.

No. 541 and 544 Directory Cabinets

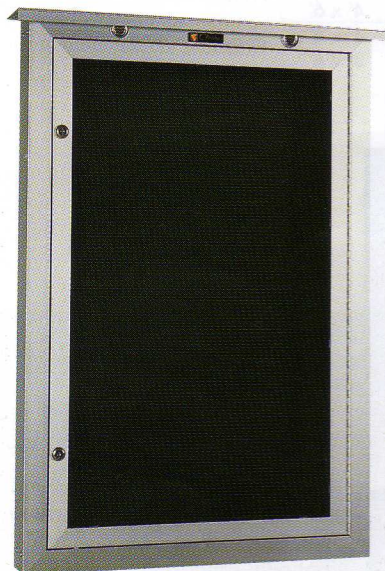
- Available with lights.



No. 541 & 544 Directories

Number	Size H - W	Wt. Lbs.	No. of Doors
541	24" x 36"	70	1
541A	30" x 36"	75	1
541B	30" x 42"	85	1
541C	36" x 36"	90	1
541D	36" x 42"	110	1
544A	36" x 48"	85	2
544B	36" x 60"	90	2
544C	48" x 60"	120	2
544D	48" x 72"	145	3

Outside depth is 3", inside depth 1-3/4".



No. 548 Outdoor Directory

Features:

- Weatherproof
- Heavy-gauge extruded aluminum construction, satin finish
- Corners and joints are weather sealed
- Weather-tight back is rust-proof steel
- Overall depth 3", inside depth 1-15/16"

Note: Because of a tendency to fade from the sunlight, we do not recommend using felt or cork on outdoor signs. We recommend vinyl.

10110/CLC

BuyLine 3119

Directories

Aluminum Frame Directories Letters & Directory Color Selector

Changeable Letter Directory Cabinets

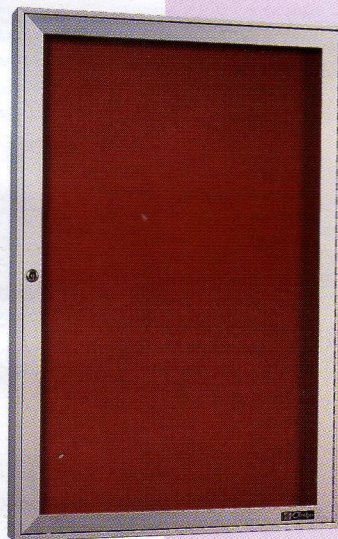
Features:

- Available with felt, vinyl, and grooved cork (color selection at left)
- Back panels are grooved on 1/4" centers
- Standard frame finish is satin anodized aluminum
- Directory cabinets have hinged doors with lock and key
- Standard glass is 3/16" float
- Concealed hangers are furnished

Options:

- Fluorescent light (not available on 440 or 441)
- Tempered glass
- Bronze Duracolor finish, Medium or Dark Bronze Anodize finish, Gold anodize finish and Powder Coat finish

Note: Specify color, type of panel and frame finish. If not specified, black felt with satin anodize frame will be furnished.



No. 440 & No. 441 Glass Door Directory

No. 440 & 441 Directories

Number	Size (H x W)	Weight Lbs.
†440A	20" x 30"	47
440E	42" x 30"	76
†441B	24" x 18"	35
†441C	30" x 20"	47
†441E	36" x 24"	55
441G	48" x 36"	110

Case depth 1-3/4" outside, 3/4" inside.

†Can ship UPS.

No. 548 Outdoor Directory

Number	Size (H x W)	Weight Lbs.
548	24" x 18"	30
548B	36" x 24"	58
548C	24" x 36"	58
548F	36" x 36"	75
548G	42" x 36"	86

Premiere Contemporary & Traditional Style

Lecture Units

Features:

- White LCS markerboard writing surface
- No. 1691 Quartz Designer fabric bulletin board inside doors
- Concealed hangers for easy and secure installation
- Furnished with 1 white sketching pad, 12 assorted LCS markers and one eraser
- Display rail with cork insert and spring clip hooks inside doors
- Contemporary units are approx. 3-3/4" deep; Traditional are 4-1/2"
- 4' units weigh approximately 120 lbs. 6' units weigh approximately 180 lbs.

Options:

- LCS inside doors in lieu of Designer fabric
- Optional bulletin board fabrics and colors in lieu of Designer fabric
- Pull down projection screen
- Fluorescent light*
- Extra sketching pads

*Note: Projection screen and light not available in same unit.



No. 508-4WN

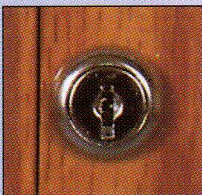
Contemporary Series

Traditional Series

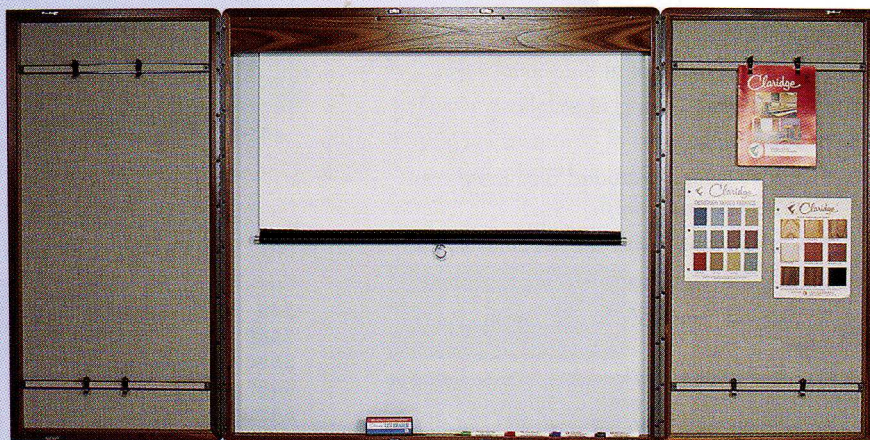
Lecture Unit Number	Credenza Number	Lecture Unit Number	Credenza Number	Lecture Unit Size (H x W)	Type Wood and Finish
508-4WN	604-4WN	608-4WN	704-4WN	4' x 4'	Walnut with natural lacquer
508-6WN	604-6WN	608-6WN	704-6WN	4' x 6'	
508-4WO	604-4WO	608-4WO	704-4WO	4' x 4'	Walnut with oil
508-6WO	604-6WO	608-6WO	704-6WO	4' x 6'	
509-4N	602-4N	609-4N	702-4N	4' x 4'	Oak with natural lacquer
509-6N	602-6N	609-6N	702-6N	4' x 6'	
509-4M	602-4M	609-4M	702-4M	4' x 4'	Oak with medium finish
509-6M	602-6M	609-6M	702-6M	4' x 6'	
509-4D	602-4D	609-4D	702-4D	4' x 4'	Oak with dark finish
509-6D	602-6D	609-6D	702-6D	4' x 6'	
512-4MN	603-4MN	612-4MN	703-4MN	4' x 4'	Mahogany with natural lacquer
512-6MN	603-6MN	612-6MN	703-6MN	4' x 6'	
512-4MS	603-4MS	612-4MS	703-4MS	4' x 4'	Mahogany with stained finish
512-6MS	603-6MS	612-6MS	703-6MS	4' x 6'	
513-4E	605-4E			4' x 4'	Ebony lacquer
513-6E	605-6E			4' x 6'	
514-4A	606-4A			4' x 4'	Almond lacquer
514-6A	606-6A			4' x 6'	
514-4G	607-4G			4' x 4'	Greystone lacquer
514-6G	607-6G			4' x 6'	



Corner Section is Oak with Natural Lacquer with Radius Corner.



Optional Lock - All Lecture Units and Credenzas are available with lock and keys.



No. 508 - 4WN with optional projection screen

Premiere Lecture Units & Credenzas

Contemporary and Traditional Style

Contemporary and Traditional Style Lecture Units & Credenzas

Features:

- Lecture Units and Credenzas are perfect companion pieces

No. 604-4WN Credenza with No. 508-4WN Lecture Unit.
Both are walnut with natural finish, Contemporary Style.

Premiere Contemporary & Traditional Style Credenzas

- Provide immediate access to supplies and equipment storage space
- Two Shelves
- Recessed Toe Space
- Hinged doors with ball catches and wooden door knobs
- Credenzas are approx. 31" high
- Contemporary credenzas are approx. 16" deep; Traditional are 16-1/2"
- 4' credenzas have two doors and weigh approx. 170 lbs.
- 6' credenzas have three doors and weigh approx. 235 lbs. Freight class 125.



- Available in Oak with natural, medium or dark finish; Walnut with natural or oil finish; Mahogany with natural or stain finish; and Hardwood with Ebony, Greystone or Almond lacquer finish

- Radius Corners (Contemporary Style)

- Square Corners (Traditional Style)

Options

- Lock and key
- Custom match finishes and unfinished units available
- Brass Color Accent Inlay (Contemporary style units have one accent strip; Traditional style units have two.)
- Square corners (Contemporary)

No. 702-4M Credenza and
No. 609-4M Traditional
Style Lecture Unit

Corner section is optional Brass Color Accent Inlay on Traditional Style Lecture Unit in Walnut with Natural Lacquer finish.

Corner section is optional Brass Color Accent Inlay on Contemporary Style Lecture unit with Ebony Lacquer finish.

Lecterns

Amplified, Adjustable Height and Modular

Claridge amplified lecterns have limited one year warranty.

No. 326 Adjustable Height Lectern

Features:

- Manual height (hydropneumatic) adjustment raises or lowers over a 6" range
 - Lectern is 29" wide, 25" deep, with a height adjustment from 47" to 54"
 - Reading surface 13-1/2" x 25-1/4"
 - Custom match finish
- Weights approx. 180 lbs.
Shipped by motor freight, class 125.



No. 326, front view, fully extended.

No. 326 back view, in lowest height adjustment.

No. 318 and 326 Amplified Lecterns

Features

- Hand-finished to enhance and preserve the natural beauty of the wood
- Available in Oak with natural, medium or dark finish and Walnut with natural or oil finish
- Reading Light
- Casters for easy mobility

Options

- Lectern clock
- Lectern Mic (microphone only when amplifier is not required)

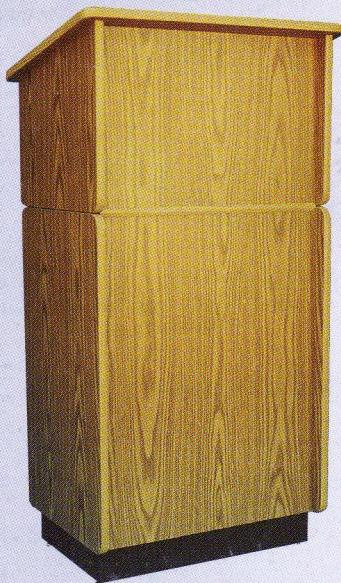
Sound Equipment:

- Amplifier has 35 watt peak power
 - Eight 4" extended-range speakers
 - On/off volume control switch
 - Two microphone inputs; 1 auxiliary input, and 2 auxiliary outputs for optional speakers
 - Unidirectional microphone with flexible mic arm
 - AC or DC powered using 2 6-volt spring type lantern batteries. Batteries not included.
- If sound system is not required, specify on order.

No. 323 Speaker's Stand

Features:

- Constructed of easy-to-clean laminate in walnut or oak
 - Lift-off table top lectern
 - Decoratively banded to prevent splintered or broken edges
 - Two storage shelves
 - 45-1/2" high, 24" long, 18" deep
 - Glides furnished
- Weights approx. 90 lbs.
Shipped by motor freight, class 125.



No. 318 Column Sound Lectern

- Streamline design
 - Unit is 45" high, 22" wide, 20" deep
 - Reading surface is approx. 13-1/2" x 20"
- Weights approx. 90 lbs.

Shipped by motor freight, class 125.

